

## Conditioning vessels

Industriel Techniques Ltd, design and manufacture conditioning vessels from craft and micro brewery volumes to 200 Brl capacity.  
Vessels constructed to PD 5500 – 2009 and or ASME VIII Div 1 design codes CE marked.

### Design data vessel

Working pressure - 1 Bar.g  
Working temperature - -2°C/+ 20°C  
Internal surface finish - 0.8 Ra

### Design data Jackets

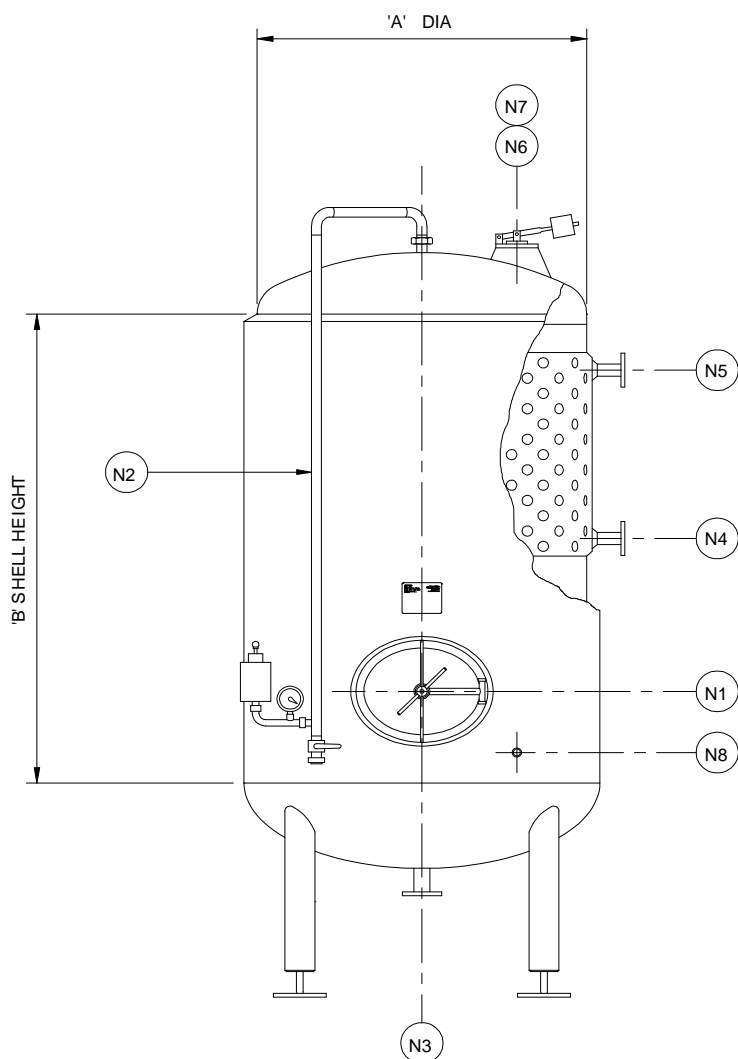
Working pressure - 2 Bar.g  
Working temperature - -2°C / +20°C

### Nozzle schedule

N1 Elliptical manway  
N2 Combined CIP / C02  
c/w bunging device  
N3 Inlet / outlet  
N4 Jacket inlet  
N5 Jacket outlet  
N6 Anti-vacuum valve  
N7 Pressure relief valve  
N8 Sample valve

### Options

Increased working pressures  
Top manways  
Sight glasses  
Top plates  
Heat trace pads  
Constant pressure devices  
Welded or riveted cladding  
Hip plate mountings



### Contact

Tel. 01449 616109  
Fax. 01449 678264  
e-mail info@indtec.co.uk  
www.indtec.co.uk



Working volume	Dim A	Dim B
817 Litres	1000 mm	1000 mm
1634 Litres	1250 mm	1250 mm
2451 Litres	1400 mm	1500 mm
3268 Litres	1750 mm	1200 mm
4903 Litres	1750 mm	1900 mm
6537 Litres	2000 mm	2000 mm